

JASCO
PRO
SERIES



CIRCADIAN LIGHTING SMART HOME



INTRODUCTION

Upgrade any space with the benefits of high-quality lighting. From health and wellness enhancements to increased convenience and comfort, JascoPro Series circadian lighting with SmartCycle capabilities stand out from traditional lights. The ecosystem works together seamlessly to offer unique features and functions.

90%

of U.S. homeowners say high-quality lighting is vital to relaxing and disconnecting from the world.

- Harris Poll

By creating a personal daily program using SmartCycle technology, your bulbs automatically adjust brightness and color temperature of tunable lighting to meet your needs. JascoPro Series smart switches work seamlessly with JascoPro Series Wi-Fi bulbs to create a whole-home circadian lighting solution. Experience the full functions of the smart bulbs and convenience of the switches without interruption.

TECH & INNOVATIONS

SMARTCYCLE

Harness the power of the sun in your home with SmartCycle. Working in the background, the innovative feature automatically adjusts light levels throughout the day to support focus and restfulness exactly when needed.

EMERGENCY FLASH

Make every moment count with Emergency Flash. A distinct blinking pattern provides first responders a visual cue of your location to save valuable time in an emergency.

SMART BULB MODE

Experience the full features of circadian lighting through smart bulb mode. Available in JascoPro Series in-wall Wi-Fi devices, the function maintains a continuous connection with smart bulbs to enjoy adjustable white settings, remote dimming, SmartCycle, Emergency Flash and more.

QUICKFIT

Improved components reduced the housing depth by up to 20% compared to previous models and eliminated the need for heat tabs.

SIMPLEWIRE

Patented auto-detecting line/load terminals support fast installation by identifying line and load wires and configuring the switch accordingly.



SCAN TO
LEARN MORE!





WI-FI SMART DEVICES

Home automation gets the professional-grade treatment with JascoPro Series Wi-Fi smart lighting solutions. Connect the smart devices to a 2.4GHz Wi-Fi network to fully automate your home, no hub required! The free, easy-to-use JascoPro Series app offers innovative features and convenient control.



EASY APP CONTROL



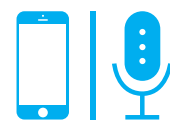
NO HUB REQUIRED



SMARTCYCLE TECHNOLOGY



EMERGENCY FLASH



MOBILE OR VOICE CONTROL



SCHEDULES AND TIMERS



SELF-ADJUSTS TO YOUR AREA



2.4GHz
Wi-Fi connection required

Longer range, better coverage

Dual- and tri-band router compatible



USE ANY MOBILE DEVICE

COMING SOON!

WORKS WITH



ALARM.COM

Wi-Fi Lighting + SmartCycle

81886 - Wi-Fi RGBWW A19 Smart Bulb



SPECIFICATIONS

Bulb	A19	Base	E26	Lumens	800
Voltage	120	Hertz	60	CCT	2000K-6500K
CRI	92	R9	50	Wattage	8.5
Efficacy (Lm/W)	88.8	Lifetime	50,000 hours		
Signal frequency	2.4GHz	Warranty	10-year limited, nontransferable		

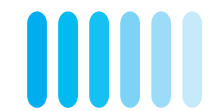
- 60W bulb equivalent
- Omnidirectional light source — no hot spots



COLOR CHANGING RGBWW



TUNABLE WHITE



FULL-RANGE DIMMING



MUSICSYNC



CERTIFIED

81889 - Wi-Fi RGBWW BR30 Smart Bulb



SPECIFICATIONS

Bulb	BR30	Base	E26	Lumens	750
Voltage	120	Hertz	60	CCT	2000K-6500K
CRI	92	R9	50	Wattage	8
Efficacy (Lm/W)	93.75	Lifetime	50,000 hours		
Signal frequency	2.4GHz	Warranty	10-year limited, nontransferable		

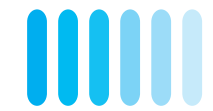
- 65W bulb equivalent
- Focused directional light source — no hot spots



COLOR CHANGING RGBWW



TUNABLE WHITE



FULL-RANGE DIMMING



MUSICSYNC



CERTIFIED

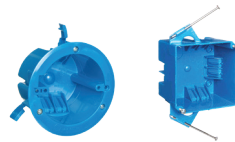
81901 – Wi-Fi RGBWW Smart Surface Light



SPECIFICATIONS

Bulb	Downlight	Lumens	1100		
Voltage	120	Hertz	60	CCT	2000K-6500K
CRI	92	R9	50	Wattage	8
Efficacy (Lm/W)	88.8	Lifetime	50,000 hours		
Signal frequency	2.4GHz	Warranty	10-year limited, nontransferable		

- 65W bulb equivalent
- Focused directional light source — no hot spots
- **Requires round or square electrical box**
Minimum spec - 2in. x 3in. x 3in. (D x W x H)



81892 – 12in. RGBWW Wi-Fi Smart Downlight



SPECIFICATIONS

Bulb	Downlight	Lumens	950		
Voltage	120	Hertz	60	CCT	2000K-6500K
CRI	92	R9	50	Wattage	12.5
Efficacy (Lm/W)	88	Lifetime	50,000 hours		
Signal frequency	2.4GHz	Warranty	10-year limited, nontransferable		

- 65W bulb equivalent
- Focused directional light source — no hot spots



73869 – 12in. Wi-Fi Smart Under-Cabinet Fixture



SPECIFICATIONS

Length	12in.	Lumens	502		
Voltage	120	Hertz	60	CCT	2000K-6500K
CRI	95	Wattage	7.9		
Efficacy (Lm/W)	63.8	Lifetime	50,000 hours		
Signal frequency	2.4GHz	Warranty	5-year limited, nontransferable		
Linkable	30 fixtures				

- Fully diffused light source — no hot spots
- 5ft. power cord; 18in. linking cord included
- Converts to direct wire



73870 – 18in. Wi-Fi Smart Under-Cabinet Fixture



SPECIFICATIONS

Length	18in.	Lumens	751		
Voltage	120	Hertz	60	CCT	2000K-6500K
CRI	95	Wattage	11.2		
Efficacy (Lm/W)	67.0	Lifetime	50,000 hours		
Signal frequency	2.4GHz	Warranty	5-year limited, nontransferable		
Linkable	30 fixtures				

- Fully diffused light source — no hot spots
- 5ft. power cord; 18in. linking cord included
- Converts to direct wire



Wi-Fi Lighting + SmartCycle

73872 - 24in. Wi-Fi Smart Under-Cabinet Fixture



SPECIFICATIONS

Length	12in.	Lumens	1005		
Voltage	120	Hertz	60	CCT	2000K-6500K
CRI	95	Wattage	16.1		
Efficacy (Lm/W)	62.5	Lifetime	50,000 hours		
Signal frequency	2.4GHZ	Warranty	5-year limited, nontransferable		
Linkable	20 fixtures				

- Fully diffused light source — no hot spots
- 5ft. power cord; 18in. linking cord included
- Converts to direct wire



73873 - 36in. Wi-Fi Smart Under-Cabinet Fixture



SPECIFICATIONS

Length	36in.	Lumens	1480		
Voltage	120	Hertz	60	CCT	2000K-6500K
CRI	95	Wattage	21.3		
Efficacy (Lm/W)	69.6	Lifetime	50,000 hours		
Signal frequency	2.4GHz	Warranty	5-year limited, nontransferable		
Linkable	20 fixtures				

- Fully diffused light source — no hot spots
- 5ft. power cord; 18in. linking cord included
- Converts to direct wire



Wi-Fi Controls - Direct Wire + SmartCycle

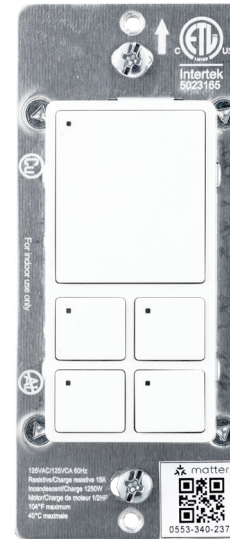
81914 - Wi-Fi In-Wall Scene-Control Switch

SPECIFICATIONS

Voltage	120	Hertz	60		
Signal frequency	2.4GHz	Operating Temp.	32-104° F (0-40° C)		
Maximum load	1200W incandescent, 1/2HP motor, 1800W (15A) resistive				
Range	Up to 100 feet from router				
Warranty	10-year limited, nontransferable				

Neutral wire required. Indoor mounting only.

- Works with all LED, CFL, incandescent and halogen bulbs
- Activate scenes from the 4 dedicated buttons
- Dual 3-way option — use existing 3-way switch for ON/OFF control or add-on switch for full-featured operation
- Uses a standard rocker wallplate — not included



81915 - Wi-Fi In-Wall Emergency Flash Smart Switch

SPECIFICATIONS

Voltage	120	Hertz	60		
Signal frequency	2.4GHz	Operating Temp.	32-104° F (0-40° C)		
Maximum load	1200W incandescent, 1/2HP motor, 1800W (15A) resistive				
Range	Up to 100 feet from router				
Warranty	10-year limited, nontransferable				

Neutral wire required. Indoor mounting only.

- Works with all LED, CFL, incandescent and halogen bulbs
- Activate up to 6 scenes in the app or with single-, double- and triple-tap commands from the device
- Dual 3-way option — use existing 3-way switch for ON/OFF control or add-on switch for full-featured operation
- Uses a standard rocker wallplate — not included



Wi-Fi Controls - Direct Wire + SmartCycle

81919 - Wi-Fi In-Wall Smart Switch



SPECIFICATIONS			
Voltage	120	Hertz	60
Signal frequency	2.4GHz	Operating Temp.	32-104° F (0-40° C)
Maximum load	1200W incandescent, 1/2HP motor, 1800W (15A) resistive		
Range	Up to 100 feet from router		
Warranty	10-year limited, nontransferable		

Neutral wire required. Indoor mounting only.

- Works with all LED, CFL, incandescent and halogen bulbs
- Activate up to 6 scenes in the app or with single-, double- and triple-tap commands from the device
- Dual 3-way option — use existing 3-way switch for ON/OFF control or add-on switch for full-featured operation
- Uses a standard rocker wallplate — not included



Wi-Fi Controls - Plug-in + SmartCycle

81910 - Wi-Fi Smart Plug



SPECIFICATIONS			
Voltage	125	Hertz	60
Signal frequency	2.4GHz	Operating humidity	5-95%
Operating temp.	14-104° F (-10-40° C)		
Maximum load	1250W (15A) tungsten, 1/2HP motor, 1875W (15A) resistive		
Warranty	10-year limited, nontransferable		

- One Wi-Fi controlled outlet with 5ft. tethered push button
- Versatile push button — manual ON/OFF operation, activate scenes and override programs
- Emergency Flash feature
- Leaves second outlet free



Add-on Multi-Switch Control

59378 - In-Wall Add-on Switch, Rocker



SPECIFICATIONS			
Voltage	120/277	Hertz	60
Operating temp.	32-104° F (0-40° C)		
Warranty	5-year limited, nontransferable		

Requires JascoPro Series smart control — not a stand-alone device.

Indoor mounting only.

- For use in 3-, 4-, 5- or 6-way configurations with JascoPro Series Wi-Fi, Z-Wave or Zigbee in-wall devices
- Requires wiring connections neutral, traveler and ground
- Connect up to four add-on switches to primary switch
- Uses a standard rocker wallplate — not included





COMING SOON

Be on the lookout for more JascoPro Series products.



Wi-Fi Under-Eave Lights

White - 84430

Black - 84426



4in. Wi-Fi Wafer Light

81895



6in. Wi-Fi Wafer Light

81895



Wi-Fi Edison Bulb

82967



Wi-Fi Candelabra Bulb -

Clear

83229



Wi-Fi Candelabra Bulb

82966



Scan to see full line
of products or visit
jascopro.com



Marketing Contact

Andree Welch
awelch@byjasco.com
405-302-2326

Jasco Representative

Chase Johnson
cajohnson@byjasco.com
405-302-2425



Follow us on
LinkedIn

Jasco Products Company LLC
10 E. Memorial Road Oklahoma City, OK 73114
Inquiries? Contact our Sales Support at 1-833-981-0170, M-F, 8AM-5PM Central Time.
©Jasco 2024